

Horizontal Bed Head Service Unit

The WTK Horizontal Bed Head Service Unit is designed to provide nursing services, with the capability to mount medical gas pipeline, electrical services (LV & ELV), data communication & lighting system for many hospital areas.

It has a compact design, which complies fully with the international codes and standards.

As a standard package, the panels have been powder coating to standard colours with the high quality epoxy powder paint.

Special colour is also available upon request

The medical gas compartment has the capability to provide the excess of 5 medical gas pipelines.

Low voltage & extra low voltage have been segregated to conform to BS7971.

All the body has been earthed to comply with the strictest requirement.

All the front panels can be opened from the front to ease the maintenance work.

The panels are also able to suit all the special requirements on free issue items

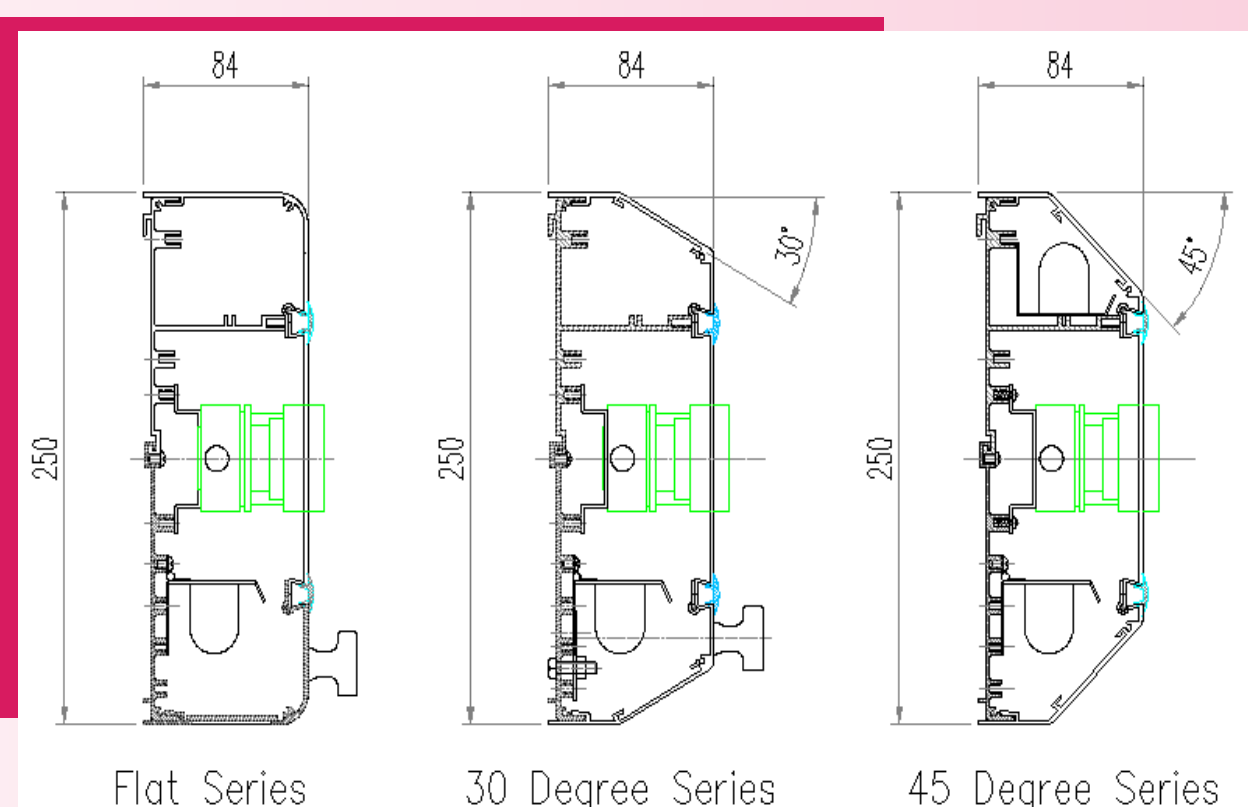


Innovative Design in Medical Engineering

Two basic designs are available, single face 250mm series and double-face (usually for ICU and critical areas) 380mm series & triple layer 506mm series.

3 profiles are available from Flat Series, 30 Degree Series and 45 Degree Series to meet various architectural needs.

WTK is also producing special flush mounted bed head unit with ID design.



Three Unique Profiles

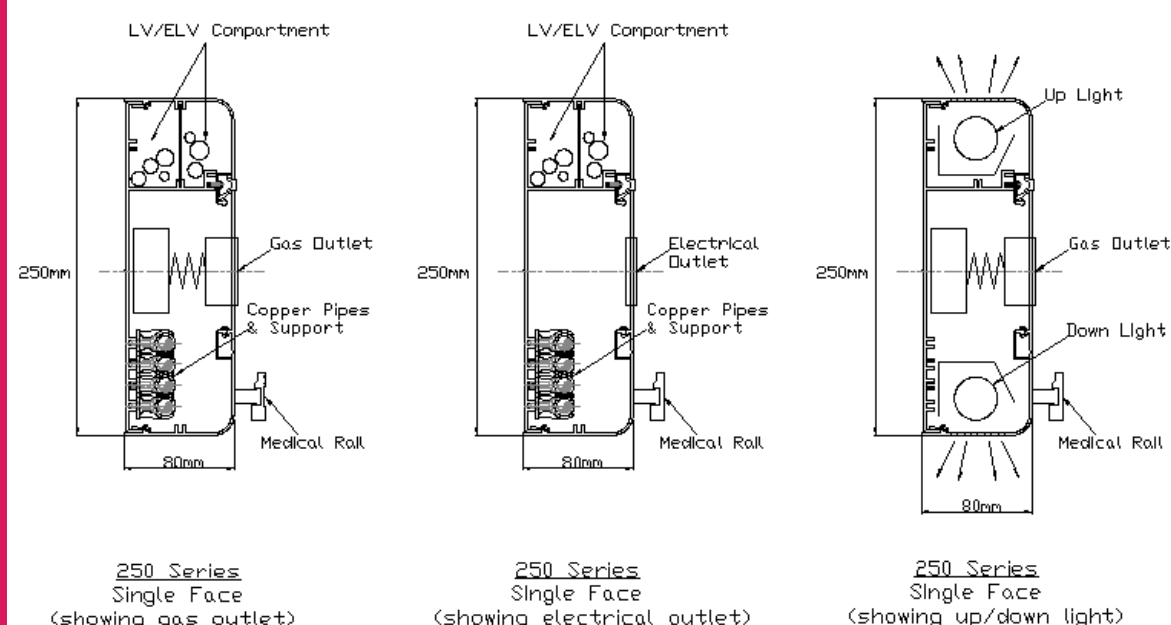
WTK Bed Head Trunking could also be used with other vertical system complete with IV poles, adjustable trays, drawers unit, lighting system, basket etc. so the integration of equipment is eliminating the usage of all portable system which could save the floor space.

The medical gas compartment has the capability to provide the excess of more than 5 medical gas pipelines.

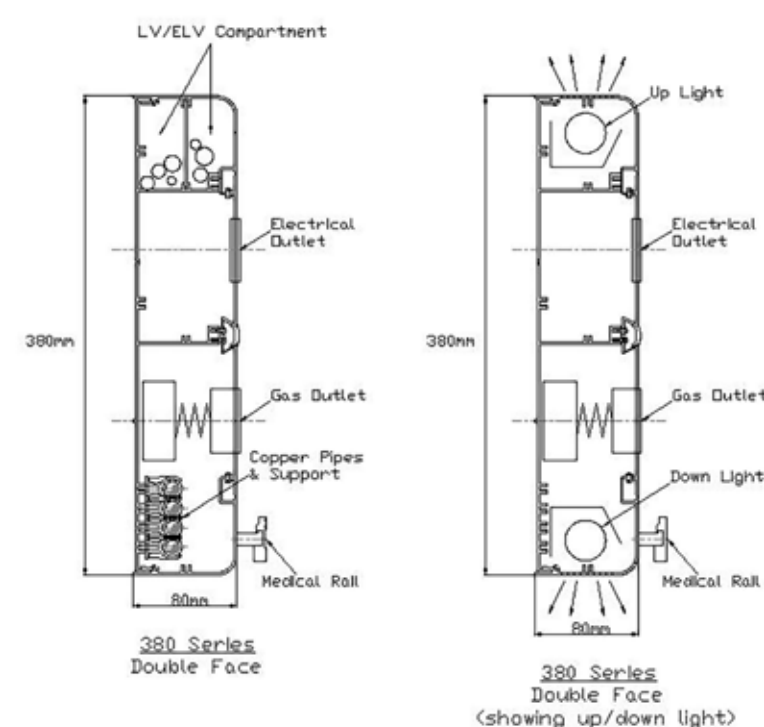
Technical Specification

MS 2675 – I:2017 Medical gas systems
 HTM 2022 : 1997/HTM02-01 – Medical Gas Pipeline system
 HTM 2015 – Bed head Services
 HTM 2020 – Electrical Safety Low Voltage System
 C11– NHS Estates Model Engineering Specification
 EN737-3: 1998 – Medical Gas Pipeline System
 EN ISO 7396-1 – Medical gas pipeline systems
 EN ISO 11197:2019 – Medical Supply Units

Designation : WT02001 Horizontal Trunking 250mm series
 WT02001A Horizontal Trunking 380mm series
 Dimension : 250 series – 250mm H x 80mm D
 380 series – 380mm H x 80mm D
 Material : Aluminium extrusion
 Finishing : Epoxy powder coating
 Integratio : Medical Rail, Hooks, Monitor Trays, IV poles etc.



250mm Series – Single Layer



380mm Series – Double Layer

Model Number

WT02001	Horizontal Trunking 250mm series. (single layer)
WT02001A	Horizontal Trunking 380mm series. (double layer)
WT02002	T. U. cut-out only, unit
WT02003	T. U. complete include piping
WT02004	Electrical cut-out only, unit
WT02005	Electrical outlet complete include wiring, std type
WT02006	Switches cut-out only, unit
WT02007	Switches complete include wiring, std type
WT02008	Bed Head Light include wiring
WT02009	Medical rail (universal size 10 x 30mm)
WT02010	Medical rail end cap, blue
WT02011	Medical rail end cap, grey
WT02012	Sealing Gasket, blue
WT02013	Sealing Gasket, grey
WT02014	Sealing Gasket, green
WT02015	Drawer unit, single (S), double (D) or Triple (T)
WT02016	Adjustable Tray
WT02017	IV Pole with 2 hooks
WT02018	IV Pole with 4 hooks
WT02019	Vertical Medical Rail with mounting kits
WT02020	Bed Bumpers 200mm x 30mm
WT02021	Low Cost Angle Poise Lamp, 18W
WT02022	Examination Light, 43,000 LUX



Flush Mounted Design



Decorative Solid Wood Design



Medical Rail WT02009